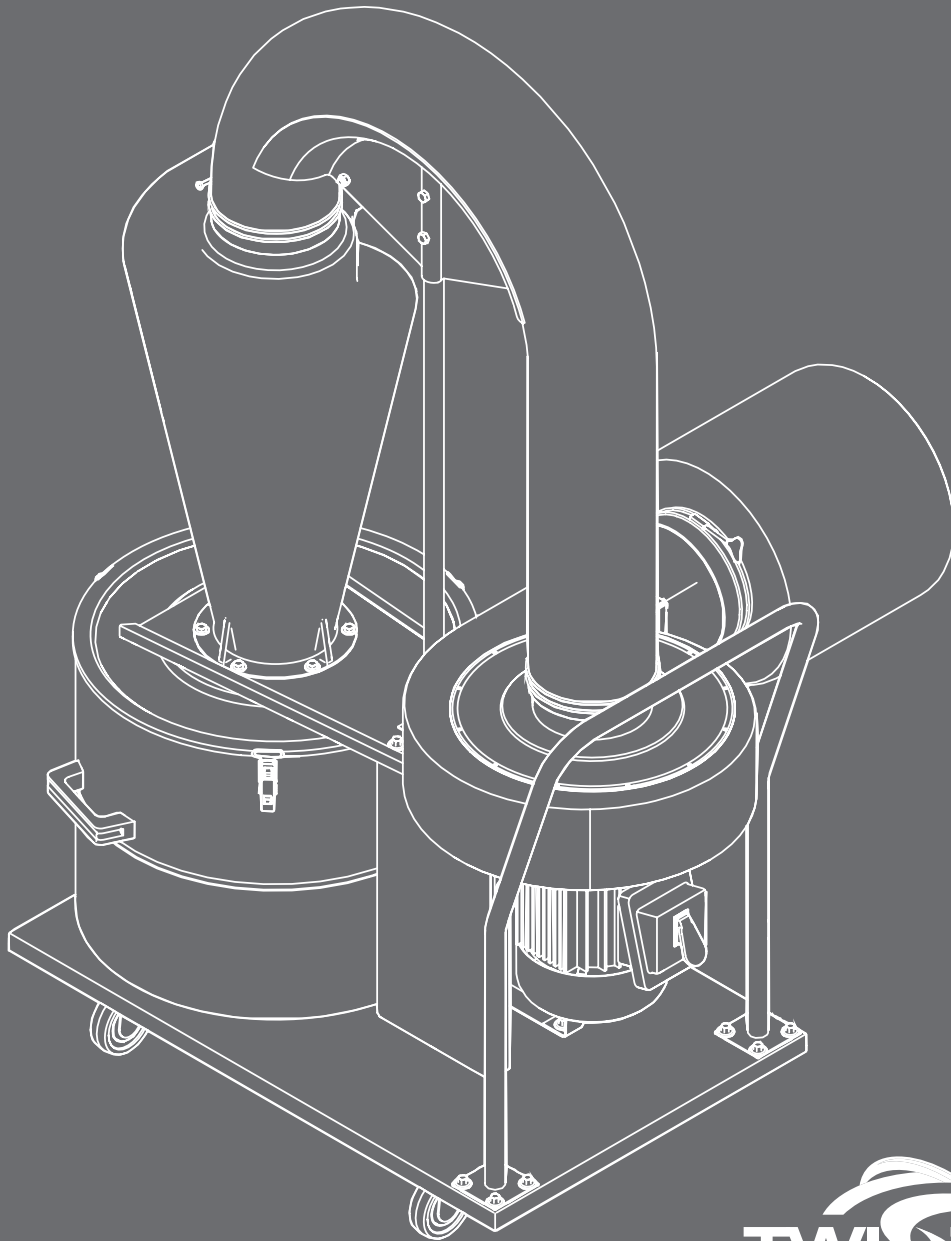


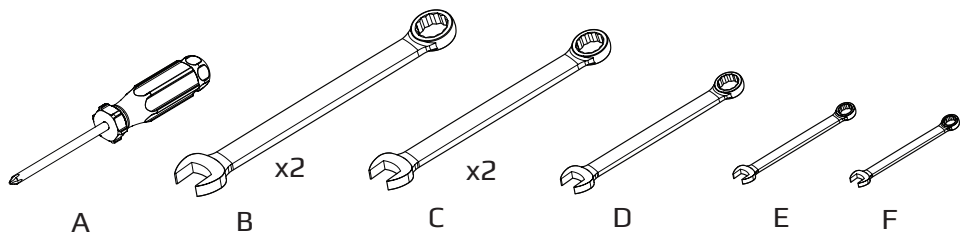
# Trim Saver

## Assembly Instructions

### CS-18 Manual

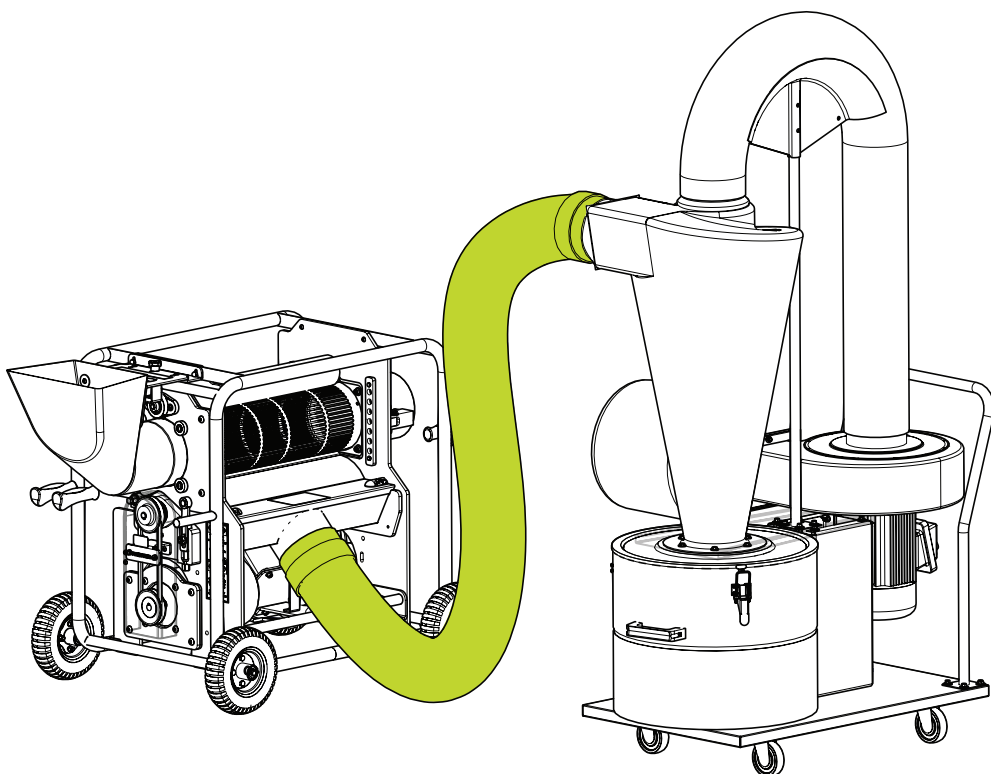


## TOOLS NEEDED

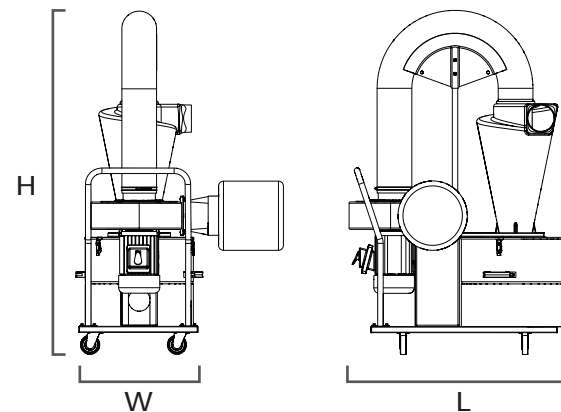


REF	DESCRIPTION	
A	Phillips Head Screw Driver	1
B	1/2 Inch Wrench	2
C	7/16 Inch Wrench	2
D	10 mm Wrench	1
E	8 mm Wrench	1
F	7 mm Wrench	1

## TWISTER T2 LEAF TRIMMER HOSE INSTALLATION



## DIMENSIONS



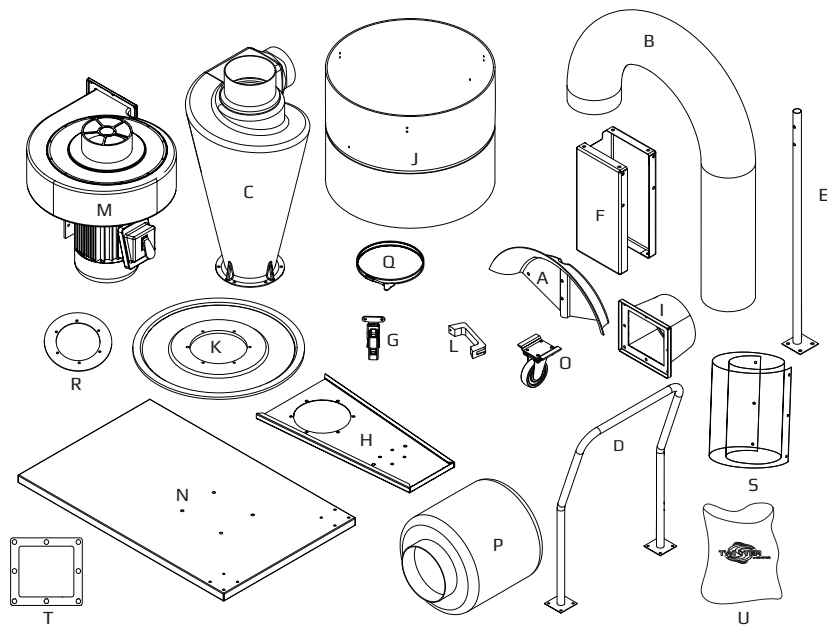
	CS-18
Length	39in / 99cm
Width	22in / 55.8cm
Height	72in / 183cm

## ELECTRICAL SPECIFICATION

	CS-18
Motor	3 HP
Input Voltage	240V
Amps (running)	15A
Amps (startup)	49A
Power Cord	AWG 12-3
Weight	170lbs/77kg
Airflow Capacity	1700 CFM
Static Pressure	10in of H2O
Impeller	12.75in / 32.4cm
Inlet	6in / 15.3cm

	CS-18
Connector (plug)	NEMA 6-20P
Additional Requirements	
Extension Cord	12-3 AWG (minimum AWG size) 15m / 50ft max Length

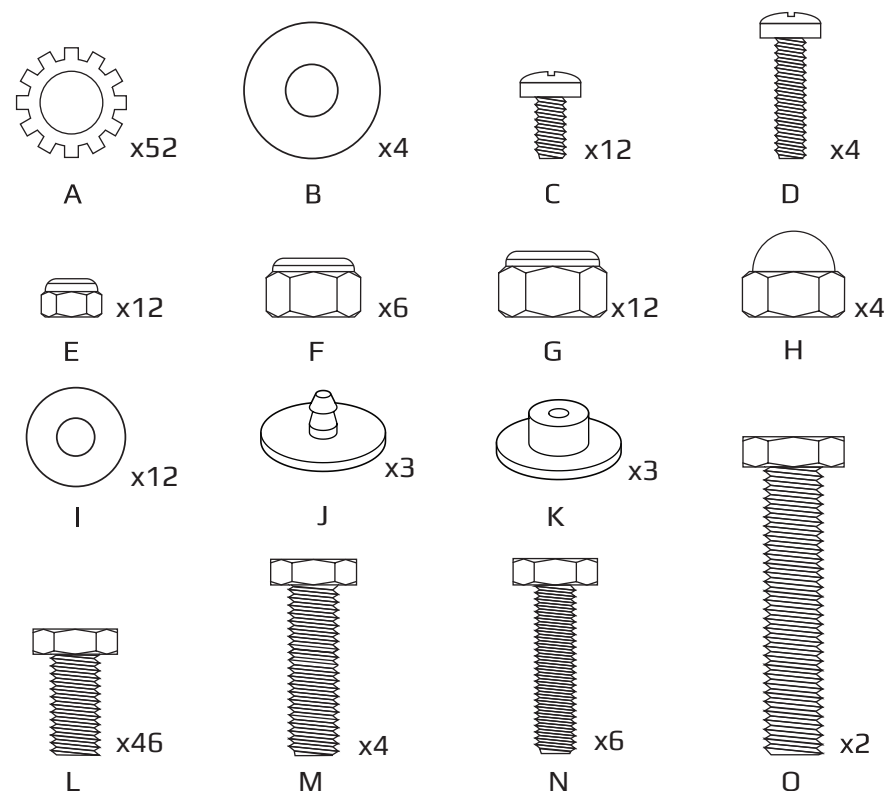
## COMPONENT PARTS



REF	PART NO	DESCRIPTION	QTY
A	23-0198-00	HOSE SADDLE	2
B	23-0199-00	6 INCH HOSE	2
C	23-0203-00	VACUUM SEPARATOR XL	1
D	23-0204-00	CART HANDLE	1
E	23-0231-00	SADDLE SUPPORT CS-18	1
F	23-0206-00	MOTOR SUPPORT	1
G	23-0207-00	LID LATCH	3
H	23-0208-00	LID HOLDER	1
I	23-0209-00	FILTER ADAPTER	1
J	23-0210-00	BIN	1
K	23-0211-00	BIN LID	1
L	23-0212-00	BIN HANDLE	2
M	23-0214-00	3HP VACUUM MOTOR	1
N	23-0215-00	BASE PLATE	1
O	23-0146-00	CASTER	4
P	23-0217-00	FILTER BAG	1
Q	23-0218-00	FILTER CLAMP	1
R	23-0226-00	SEPARATOR GASKET	2
S	23-0228-00	BIN INSERT	1
T	23-0230-00	FILTER ADAPTER GASKET	1
U	23-0133-03-P	CLEAR VACUUM BAG	1

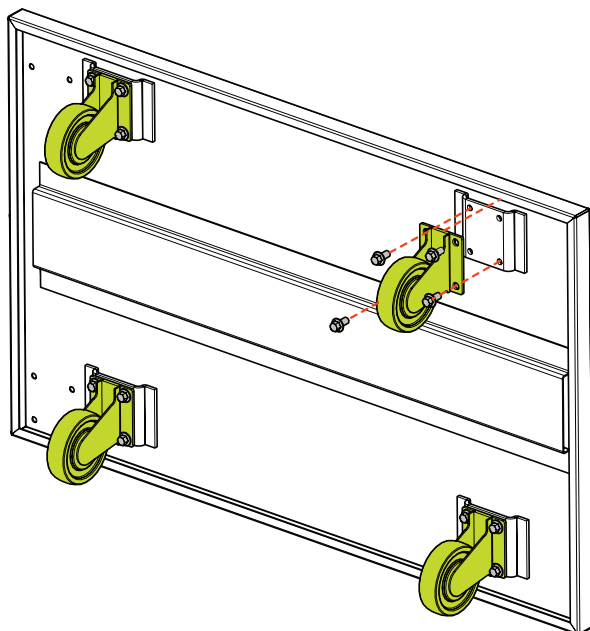
## FASTENERS

KEEP FASTENERS IN LABELLED BAGS, ASSEMBLY INSTRUCTIONS DESCRIBE WHERE EACH PACKAGE IS USED.



REF	PART NO	DESCRIPTION	QTY
A	13-02-000411	5/16 Lock Washer	52
B	13-0018-00	5/16 Flat Washer	4
C	13-05-100408	M4 x 8MM Phillips Head	12
D	13-05-142058	1/4-20 x 5/8" Truss Screw	4
E	13-03-000400	M4 Nyloc Nut	12
F	13-0062-00	1/4-20 Nut	6
G	13-0064-00	5/16-18 Nyloc Nut	12
H	13-0065-00	1/4-20 Acorn Nut	4
I	13-02-000014	1/4 Flat Washer	12
J	13-13-000205	Plastic Rivet Male	3
K	13-13-000206	Plastic Rivet Female	3
L	13-08-516158	5/16-18 x 5/8" Hex Head Bolt	46
M	13-08-516110	5/16-18 x 1" Hex Head Bolt	4
N	13-08-142110	1/4-20 x 1" Hex Head Bolt	6
O	13-08-516115	5/16-18 x 1.5" Hex Head Bolt	2

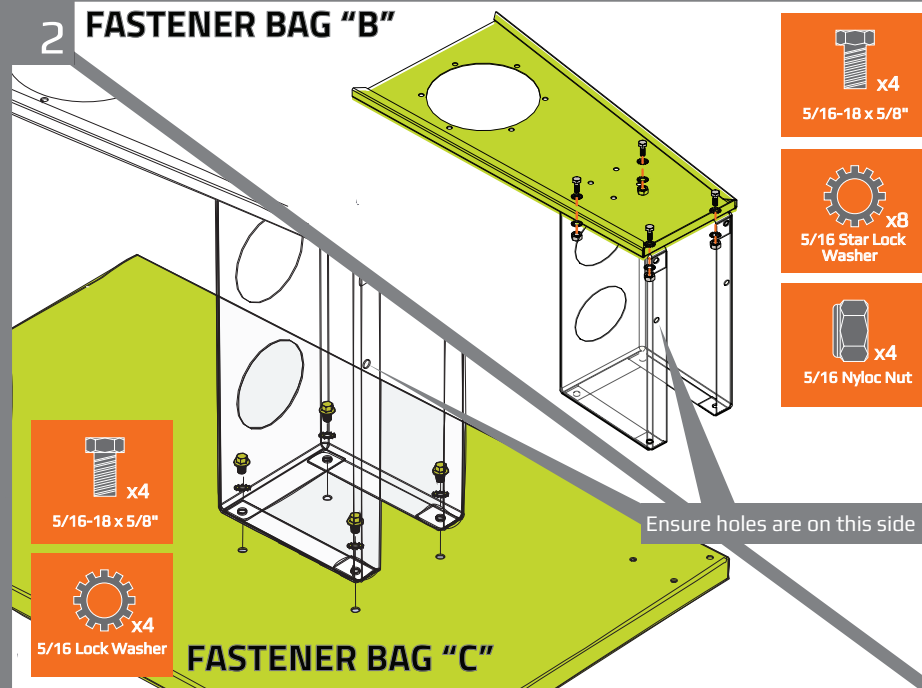
# 1 FASTENER BAG "A"



 x16  
5/16-18 x 5/8"

 x16  
5/16 Star Lock Washer

# 2 FASTENER BAG "B"



 x4  
5/16-18 x 5/8"

 x8  
5/16 Star Lock Washer

 x4  
5/16 Nylon Nut

 x4  
5/16-18 x 5/8"

 x4  
5/16 Lock Washer

# FASTENER BAG "C"

# 3 FASTENER BAG "D"



 x2  
5/16-18 x 5/8"

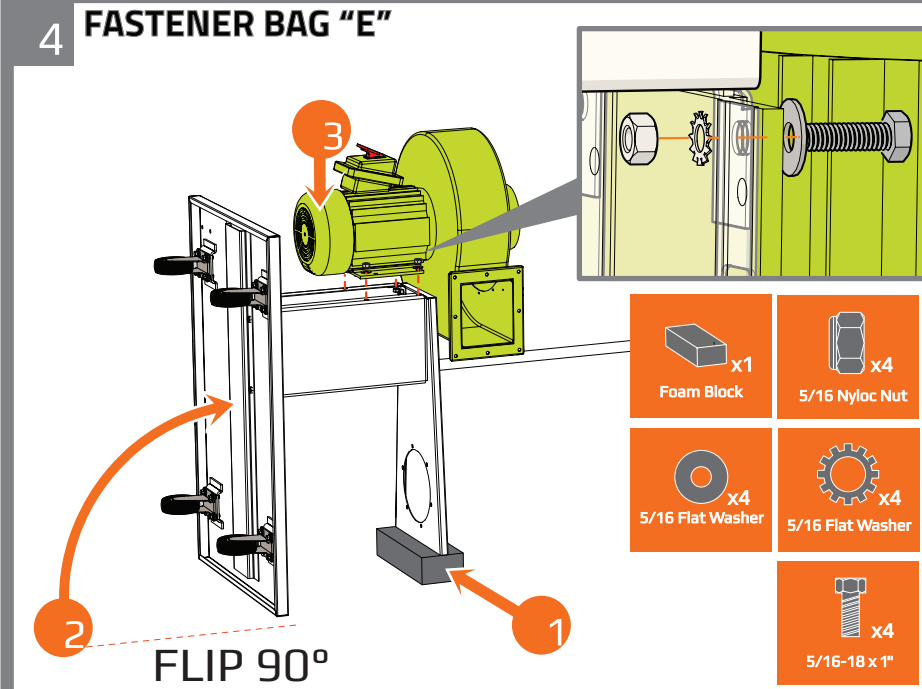
 x2  
5/16-1.5" Bolt

 x4  
5/16 Nylon Nut

 x4  
5/16-18 x 5/8"

 x4  
5/16 Lock Washer

# 4 FASTENER BAG "E"



 x1  
Foam Block

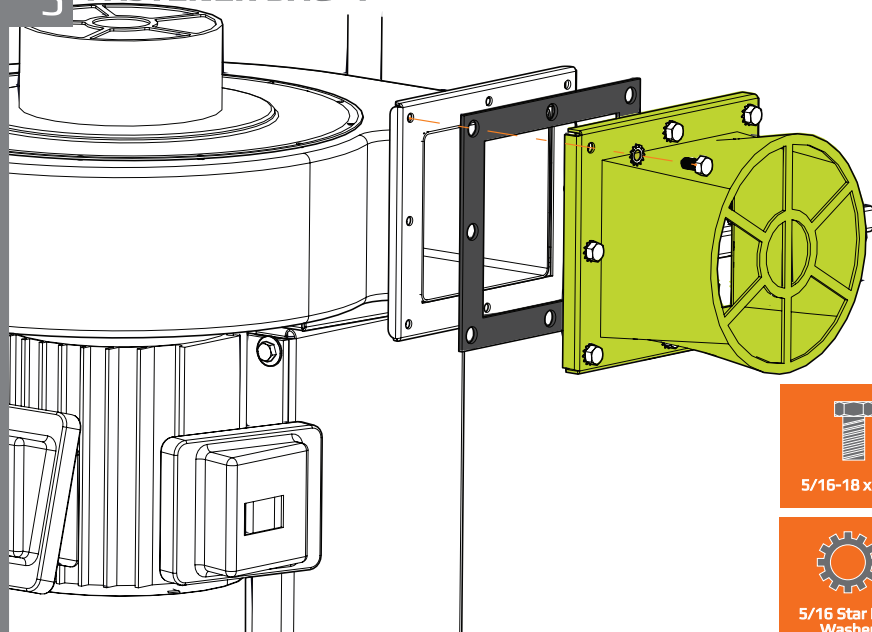
 x4  
5/16 Nylon Nut

 x4  
5/16 Flat Washer

 x4  
5/16 Flat Washer

 x4  
5/16-18 x 1"

## 5 FASTENER BAG "F"



x8

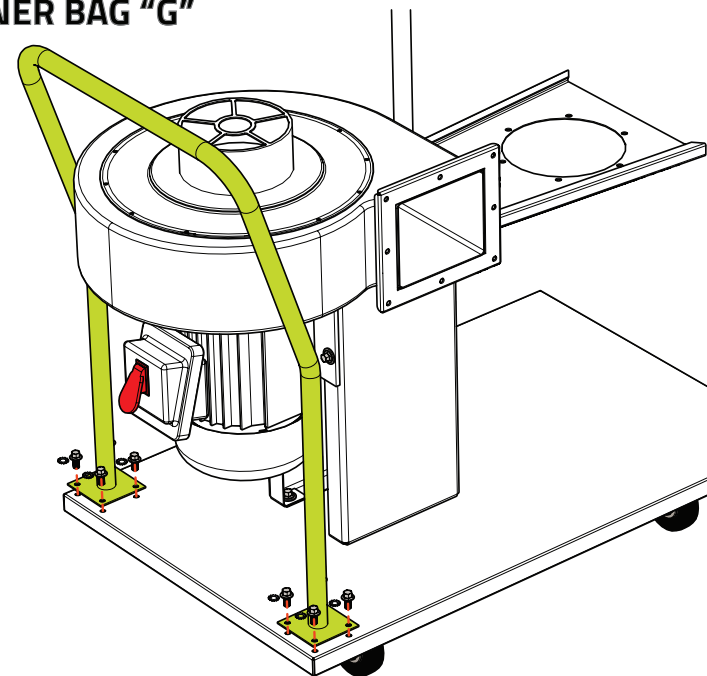
5/16-18 x 5/8"



x8

5/16 Star Lock Washer

## 6 FASTENER BAG "G"



x8

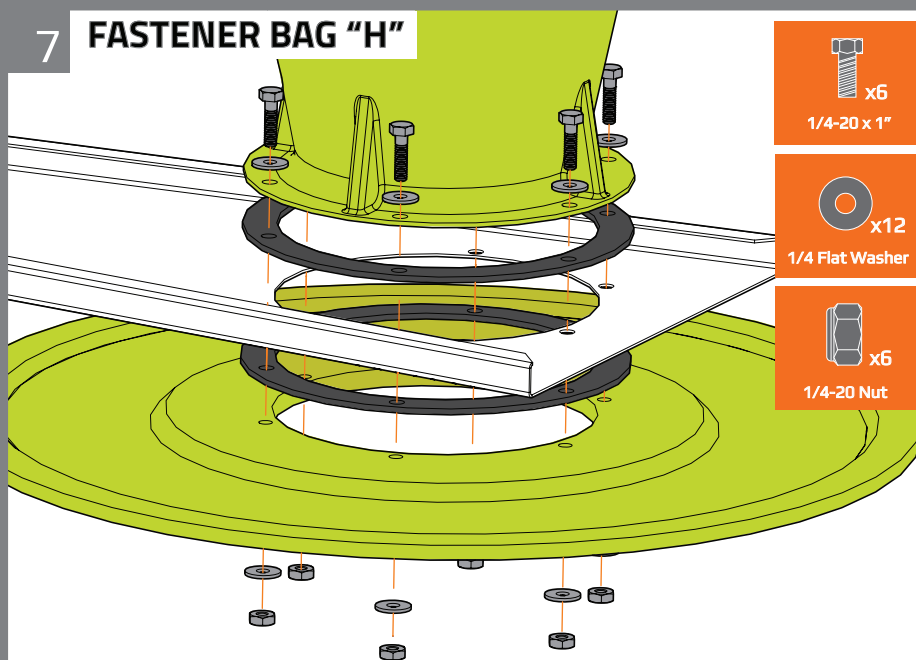
5/16-18 x 5/8"



x8

5/16 Star Lock Washer

## 7 FASTENER BAG "H"



x6

1/4-20 x 1"



x12

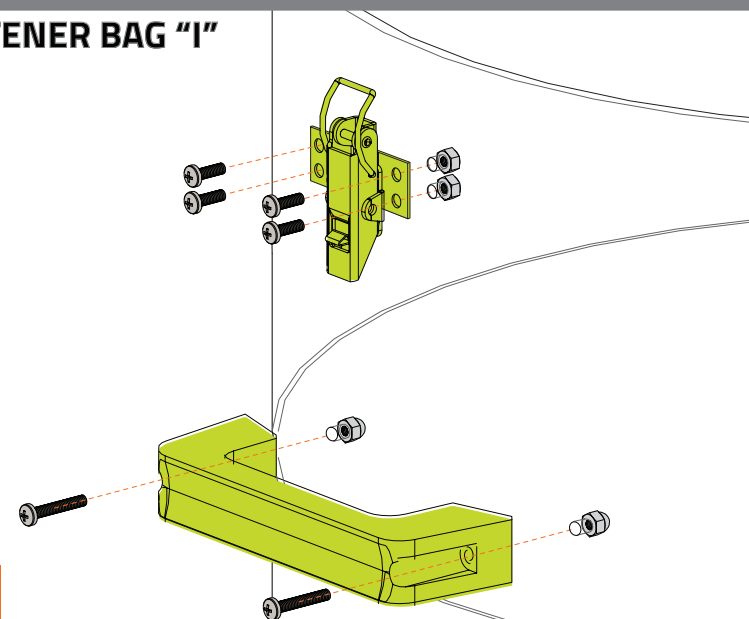
1/4 Flat Washer



x6

1/4-20 Nut

## 8 FASTENER BAG "I"



x12

M4 Nyloc Nut



x12

M4 8mm Phillips Screw



x4

1/4 5/8" Truss Screw

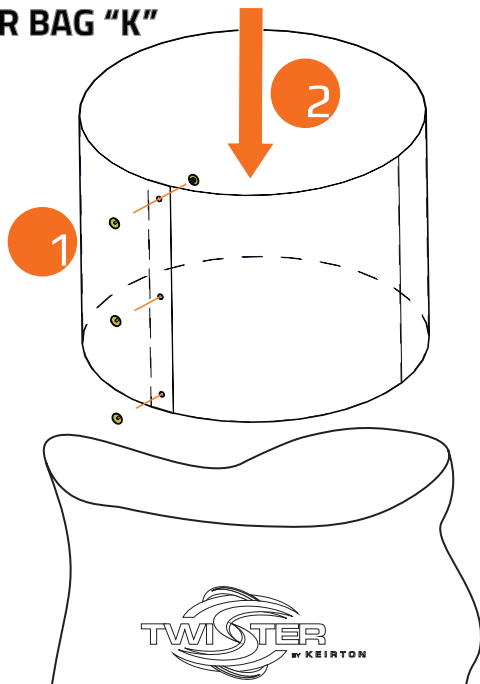


x4

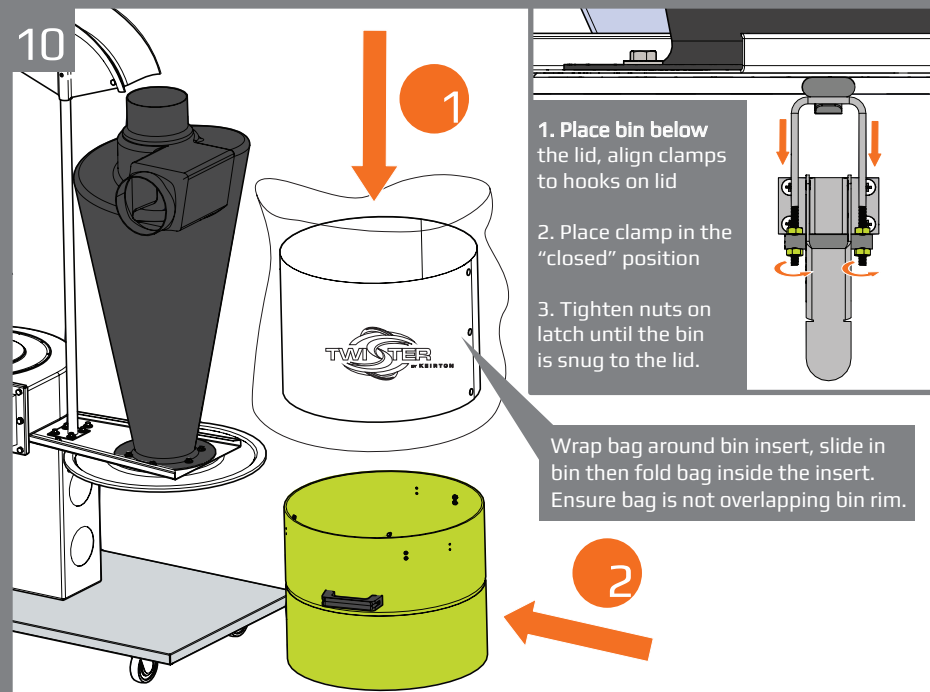
1/4 Acorn Nut

FASTENER BAG "J"

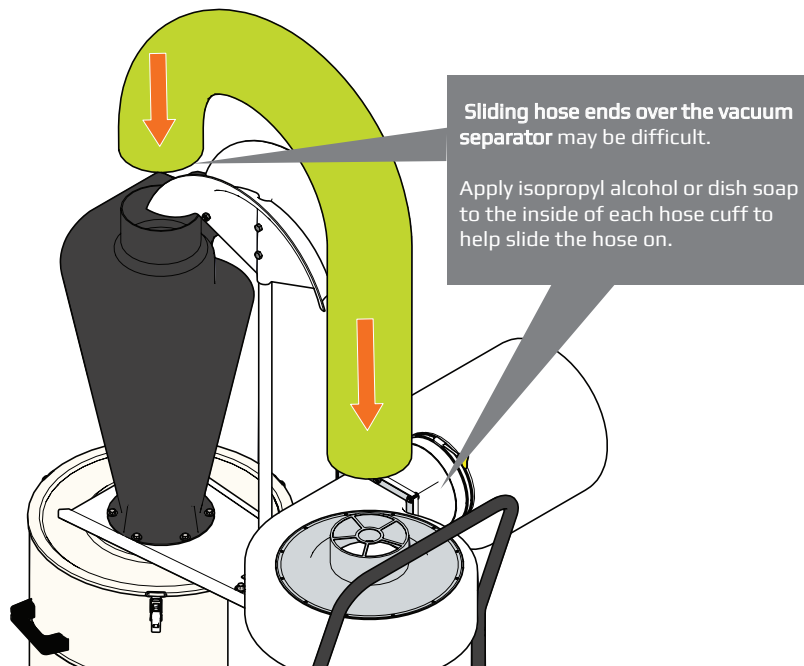
## 9 FASTENER BAG "K"



10



11



12

