



APPLICATIONS

- Applied in ventilation systems for speed switching ON/OFF and speed control of the single phase power-controlled motors.
- Several fans can be controlled synchronously in case their total current does not exceed the maximum permissible values for the controller current.

PROTECTION

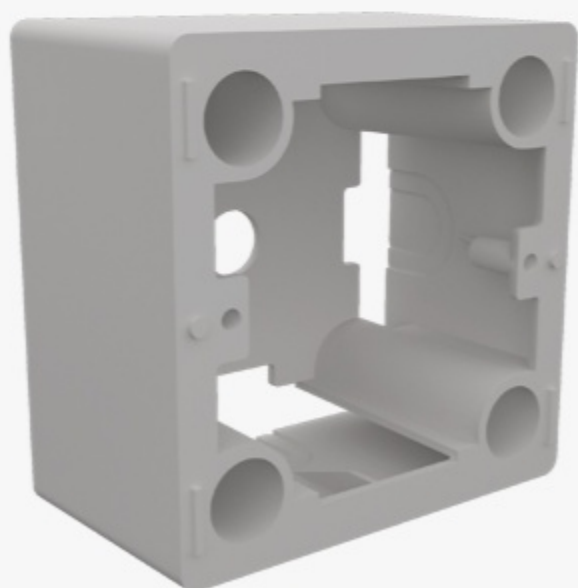
- The controller incorporate a removable thermal fuse for motor overload protection and transient filter.

DESIGN AND CONTROL

- The controller casing is made of plastic.
- The controller is featured with high efficiency and control accuracy.
- Switching to the maximum speed is effected by means of regulating the control knob.
- Regulating starts from the minimum to the maximum voltage value for the fan stable running.
- The minimum speed is set by means of the potentiometer at PCB.

MOUNTING

- The controller is designed for indoor mounting into special surface mounting (MKN-3) or flush mounting (MKV-4) junction box (under separate order) or into standard round electric junction boxes.



MKN-3 (for surface mounting)



MKV-4 (for flush mounting)

Mounting junction box